

Roxul Safe'n'Sound™

Fire and Soundproofing Insulation for
Interior Partition Walls and Floors





Sound Control and Fire Safety From One Batt Insulation

Roxul Safe'n'Sound™ is a semi-rigid batt insulation designed specifically for interior wall and floor/ceiling applications. This stone wool-based* insulation is made from natural stone and recycled content. It's a green product that provides superior sound absorbency and fire protection for overall comfort and safety.

It's not thermal insulation. Roxul Safe'n'Sound is designed specifically for one purpose – soundproofing. It is not intended for thermal applications like insulating exterior walls or attics. The optimized density that makes it an ideal sound barrier actually compromises its ability to prevent heat loss.

Water Repellent & Won't Sustain Mold

- Roxul Safe'n'Sound is resistant to water, rot, mold, mildew and bacterial growth
- Contributes to a safer and healthier indoor environment
- GREENGUARD® certified, receiving the highest designation for indoor air quality





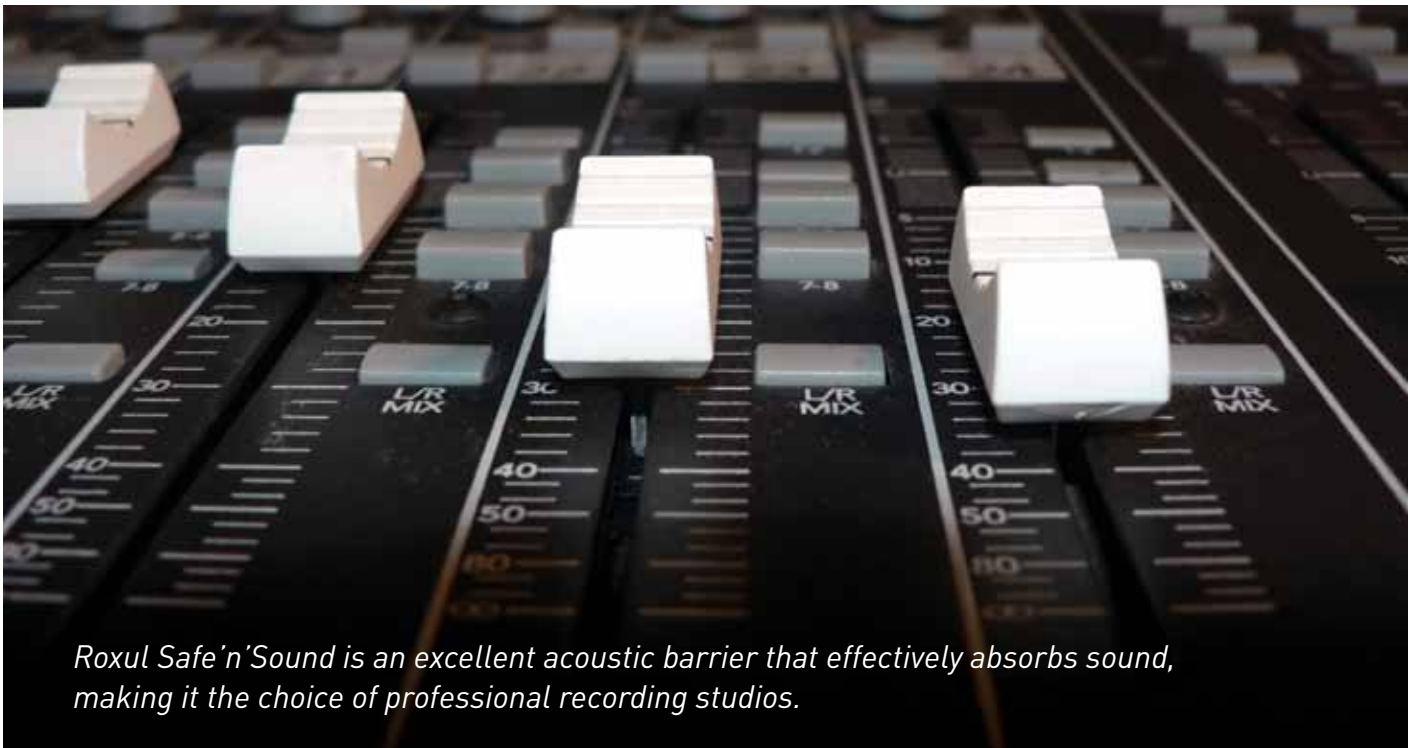
Fire Resistance Enhances Home Safety

- Combination of natural stone and recycled content makes Roxul insulation an excellent fire barrier
- Does not develop smoke or promote flame spread, even when directly exposed to fire
- Can withstand temperatures up to 1177 °C (2150 °F) providing occupants valuable extra time in case of a fire



Higher Density Means A Better Fit

- Roxul Safe'n'Sound's higher density batts make it simple to cut with a serrated knife (such as a bread knife)
- Clean, straight cuts provide optimal fit around electrical boxes, wiring, and pipes – minimizing air flow
- Superior friction fit between studs completely fills the wall cavity preventing insulation from sagging – unlike competitors' products



Roxul Safe'n'Sound is an excellent acoustic barrier that effectively absorbs sound, making it the choice of professional recording studios.

Typical Assemblies for Roxul Safe'n'Sound™

Top View



Single Stud Interior Wall

(Wood Studs – 16" On Center)

Using Roxul Safe'n'Sound, 5/8" drywall (type x) and resilient channels at 16" provides:

Fire Rating: 1 hour

*Sound Transmission Class (STC): 45

Safe'n'Sound Wall Components

(shown from outside to inside)

1. 5/8" Type X Gypsum
2. 3" Safe'n'Sound
3. Resilient Channel
4. 5/8" Type X Gypsum Board

Side View



Interior Ceiling/Floor

(2 x 10 Joists – 16" on Center)

Using Roxul Safe'n'Sound, 5/8" drywall (type x) and resilient channels at 24" provides:

Fire Rating: 30 minutes

Sound Transmission Class (STC): 50

Safe'n'Sound Ceiling/Floor Components

(shown from outside to inside)

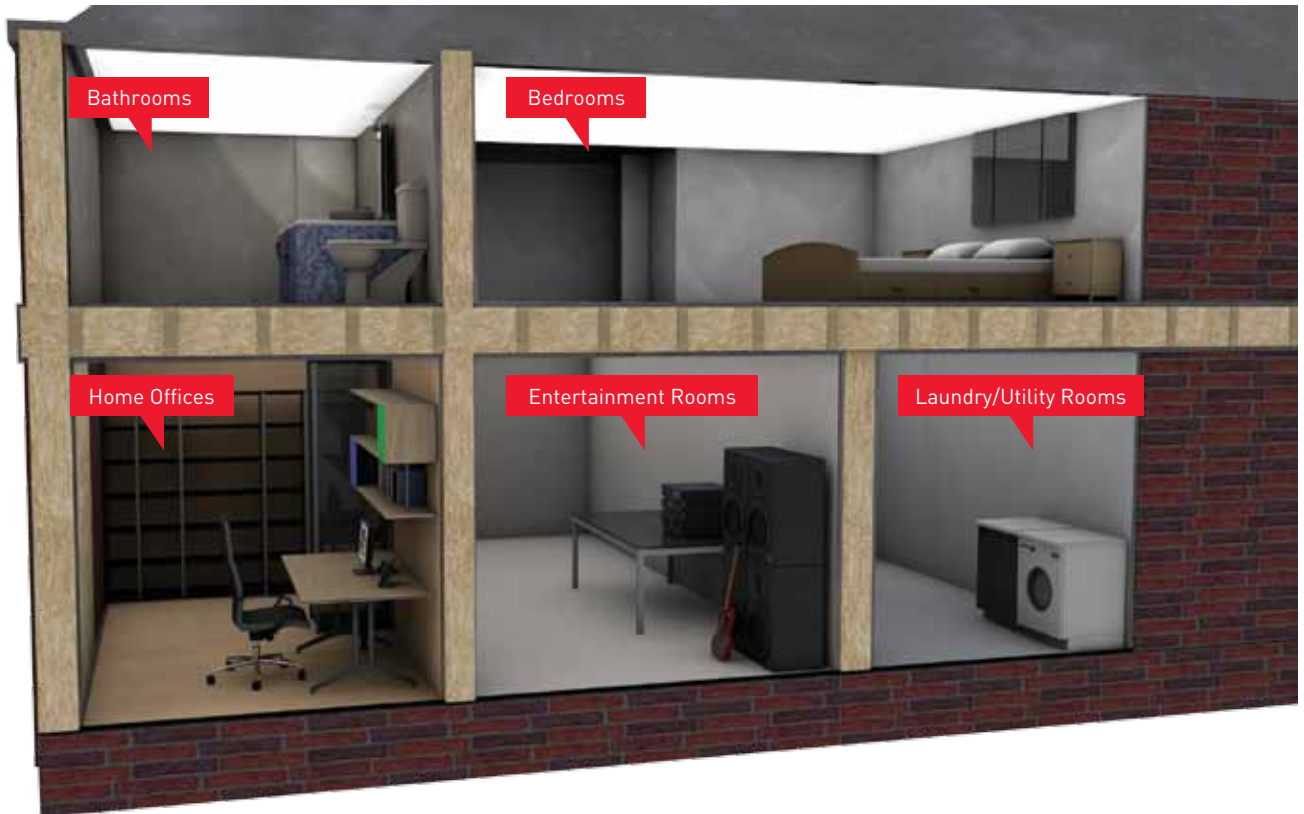
1. Plywood Floor
2. Air Space
2. Two layers of Safe'n'Sound
4. Resilient Channel
5. Gypsum Board

*To achieve a fire rating of 45 mins, space resilient channels at 16" on-center.



Fire resistance makes Roxul Safe'n'Sound an easy sell.

Because it doesn't burn, Safe'n'Sound can delay the spread of fire for added safety.



Sound Control Delivers Peace and Quiet

- Install Safe'n'Sound in interior walls between rooms and in ceilings between floors
- Higher density batts more effectively reduce air flow – thereby decreasing sound transmission (see diagrams on opposite page)
- Performance tested to provide higher sound absorption against low frequency (bass) ranges, which are most difficult to block
- Typical household applications include home theater, basements (ceilings), home office, laundry room, bathroom and furnace room



The Safe'n'Sound interior partition wall and floor system is ideal for residential renovation activity such as media rooms.

Specify Roxul Safe'n'Sound™ for Every Home

Home Life is Changing, so Sound Dampening is More Important than Ever

Life is getting louder around the home. Televisions, home theaters, computers and video games blare from almost every room. Family cell phones constantly ring. More people work from home offices and entertainment rooms are the norm.

More and more, sound dampening is a must-have requirement for any modern family home. And, it's an ideal **revenue-generating opportunity** to offer Roxul Safe'n'Sound – the premium acoustic insulation for interior walls and for ceilings between floors.

Satisfy your Customers by Creating a Quieter Home

Don't wait for your home buyers to ask about ways to make their homes quieter, safer and more comfortable. Make peace and quiet and fire protection available on every new build with Roxul Safe'n'Sound.

Unlike other insulation, Roxul Safe'n'Sound is performance-tested to provide higher sound absorption against low frequency (bass ranges).



Roxul Safe'n'Sound and GREENGUARD®
Children & Schools Certification.

The GREENGUARD Environmental Institute (GEI) is a non-profit organization that oversees the GREENGUARD Children & Schools standards. The GEI's mission is to protect human health and quality of life through programs that improve indoor air that people breathe. They offer strict certification criteria for products intended for use in schools, daycares or other environments where children spend significant periods of time. Roxul Safe'n'Sound products are certified to this standard and are recognized by the United States Green Building Council's (USGBC) LEED® program.

Compliance and Performance

System Description	Sound Transmission Class (STC)	Fire Resistance
5/8" gypsum boards 3-5/8" steel studs spaced 24" centers Roxul Safe 'n' Sound	52	1 Hour

Above results are based upon testing using Type X gypsum board.
For additional designs, please contact ROXUL Technical Services.

Acoustical Performance

ASTM C423 CO-EFFICIENTS AT FREQUENCIES								
System Description	Thickness	125 Hz	250 Hz	500 Hz	1000 Hz	2000 Hz	4000 Hz	NRC
Roxul Safe 'n' Sound	3"	0.52	0.96	1.18	1.07	1.05	1.05	1.05

Compliance and Performance

CAN/ULC-S702-09	Mineral Fiber Thermal Insulation for Buildings	Type 1, Complies
ASTM C 665	Mineral Fiber Blanket Thermal Insulation	Type 1, Complies
CAN4-S114	Determination of Non-Combustibility	Non-Combustible
ASTM E 136	Surface Burning Characteristics	Non-Combustible
CAN/ULC S102	Surface Burning Characteristics	Flame Spread = 0 Smoke Developed = 0
ASTM E 84(UL 723)	Surface Burning Characteristics	Flame Spread = 0 Smoke Developed = 0
CAN/ULC S102	Smoulder Resistance	0.09%

Dimensions

Steel Stud	Wood Stud
3" x 16.25" x 48" 76 mm x 413 mm x 1219 mm With flexible edges	3" x 15.25" x 47" 76 mm x 387 mm x 1194 mm With flexible edges
3" x 24.25" x 48" 76 mm x 616 mm x 1219 mm With flexible edges	3" x 23" x 47" 76 mm x 584 mm x 1194 mm With flexible edges

Density

2.5 lbs/ft ³	40 kg/m ³
-------------------------	----------------------

With the push to sustainable development in the building industry, Roxul leads the way with eco-friendly products that contain natural, inorganic materials made with recycled content that can be recycled infinitely.



A Global Leader

Roxul Inc. is part of Rockwool International, the largest producer of stone wool insulation, which is made from natural basalt rock and recycled material.

Rockwool International was founded in 1909 and today operates worldwide with more than 8,500 employees, with 25 factories across three continents.

Rockwool has more than 40 years experience in developing and manufacturing advanced wall system products. For more than 20 years, Roxul has been serving the North American market.

In addition to soundproofing insulation for residential and commercial construction, Roxul also manufactures a range of other premium insulation products for multiple applications.

Roxul is the Better Insulation

Roxul Safe'n'Sound™ is an innovative insulation offering a world of green features. When Roxul is the specified insulation, green building developers can earn a variety of LEED® (Leadership in Energy and Environmental Design) points across four key categories toward sustainable development.



Environmentally Sustainable

Our stone wool production process utilizes some of the most advanced technology available. The Roxul facility is designed to capture and recycle rainwater, reduce energy consumption, and create zero waste to landfill by recycling raw materials back into the production process.

Roxul insulations are created using naturally occurring, inorganic raw materials and materials with a high-recycled content. Stone wool insulation is non-combustible and achieves its thermal performance without the use of blowing agents. The products do not off-gas and are fully recyclable, therefore contributing to a sustainable environment.

Roxul is pleased to have third-party certification of our products' recycled content for our Milton facility, completed by **ICC-ES SAVE™**. All Roxul products produced in the Milton facility contain a minimum of **75% recycled content**. Our Milton facility is certified to produce products containing up to 93% recycled content. For further details, contact your Roxul Sales Representative. Roxul products produced in our Grand Forks facility are currently under ICC-ES SAVE™ Certification review. Please visit www.roxul.com for the latest information.

ROXUL INC.

420 Bronte Street South
Suite 105,
Milton, Ontario L9T 0H9
Tel: 1-800-265-6878
www.roxul.com

